

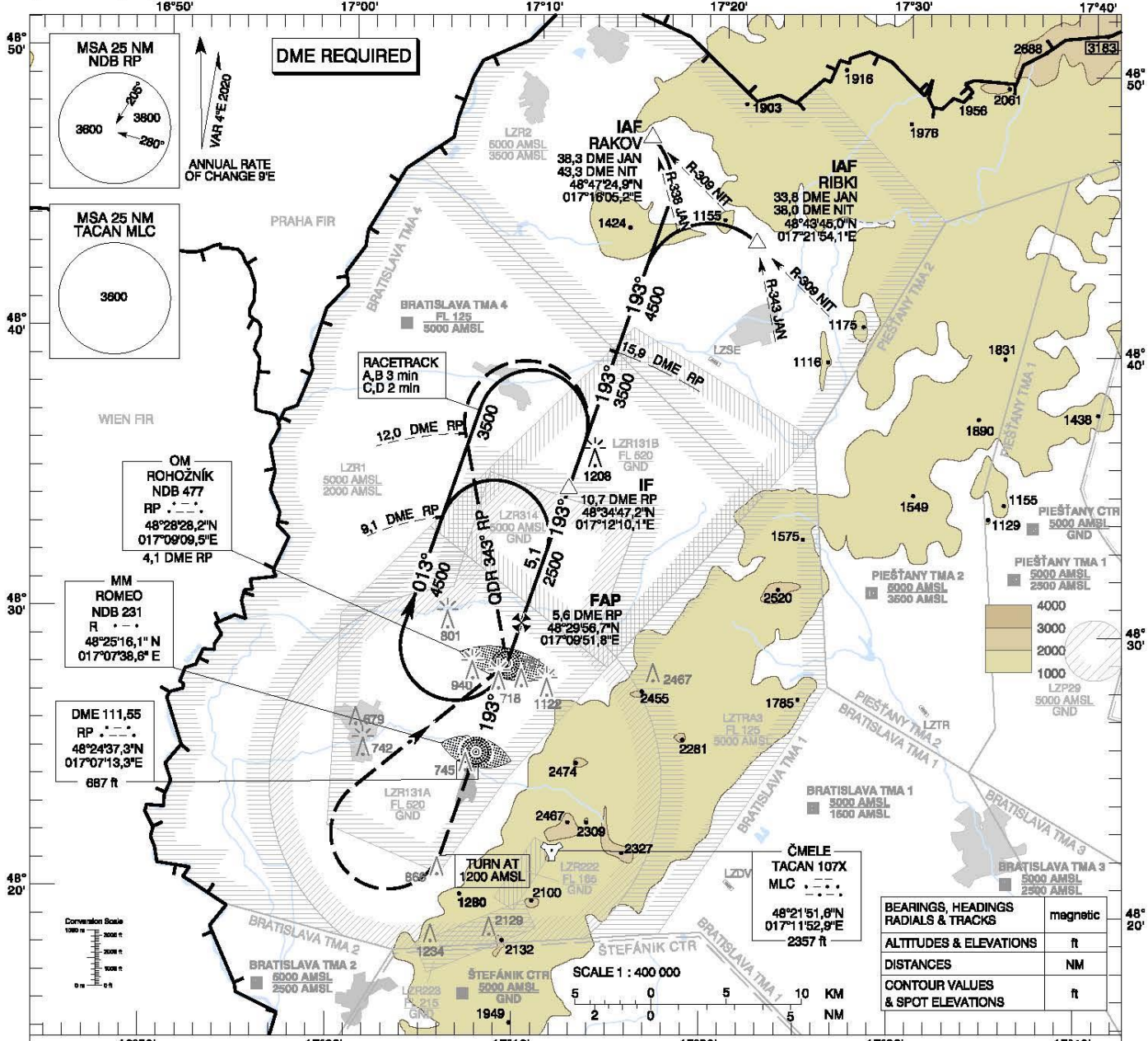
1. FROM 01.01.2020 00:01: AIRCRAFT ARRESTING NETS TYPE TFF-82 FOR RWY 01 AND 19 U/S. EST: UFN
2. FROM 01.01.2020 00:01: EMERGENCY GRASS STRIP CLSD. EST: UFN
3. FROM 17.12.2020 06:00: PILOTS MUST STRICTLY FOLLOW MARSHALERS INSTRUCTIONS AT APRONS. EST: UFN
4. FROM 20.04.2022 11:14: TWY F OUT OF SERVICE. EST: UFN
5. FROM 06.12.2022 15:30: ALTERNATE COMM LOSS PROCEDURE WITH ACTIVE AREA R131B: DEPARTING IFR TRAFFIC EXPERIENCING COMM LOSS BEFORE REACHING NDB RP, ENTER ALTERNATE HOLDING PATTERN ESTABLISHED AT NDB RP, 125 DEG MAG INBOUND COURSE, RIGHT TURNS, 1 MINUTE OUTBOUND LEG, MINIMUM HOLDING ALTITUDE 5000 FT. HOLD FOR 10 MINUTES THEN PROCEED ACCORDING TO AIP SR (ENR 1.1.11). EST: UFN
6. FROM 27.06.2023 05:00: SEQUENCED FLASHING LIGHTS FOR RWY19 U/S. EST: UFN
7. FROM 22.11.2023 06:00: TACAN IN RESTRICTED OPERATION U/S. EST: UFN
8. FROM 20.03.2024 06:00: CAUTION WORK IN PROGRESS ON DAILY BASIS ON THE SOUTHERN PART OF RWY APPROX. 520 M FROM THRESHOLD RWY 01 FROM 06:00 TO 16:00 (MEN AND EQUIPMENT UNDER TWR SUPERVISION). UPON ESTIMATED DEPARTURE/ ARRIVAL RWY WILL BE CLEARED OF MEN AND EQUIPMENT. EST: UFN
9. FROM 20.03.2024 06:00: RWY 01/19 AVAILABLE FOR ARRIVAL AFTER AT LEAST 30 MIN PRIOR COORDINATION. EST: UFN
10. FROM 20.03.2024 06:00: RWY 01/19 AVAILABLE FOR DEPARTURE AFTER AT LEAST 30 MIN PRIOR COORDINATION. EST: UFN
11. FROM 06.04.2024 06:00: CAUTION RWY 01/19 TEMPORARY OBSTACLE EXCAVATION APPROX 500 M FM THRESHOLD RWY 01 BOTH SIDES. DEPTH APPROX 50 CM, DIMENSIONS APPROX 3X5 M. EST: UFN
12. FROM 20.05.2024 15:00: PRECISION RADAR APPROACH AVAILABLE ONLY FOR AIRCRAFTS OF THE SLOVAK AIR FORCE ACCORDING TO CHART AD LZMC 7-5 (13JUL23). FOR AIRCRAFTS NOT OPERATED BY SLOVAK AIR FORCE PRECISION RADAR APPROACH NOT AVAILABLE. NDB/ILS/VISUAL APPROACH IN FORCE. EST: UFN

**INSTRUMENT  
APPROACH  
CHART - ICAO**

**TRANSITION ALTITUDE**  
10 000 ft  
AD ELEV 688 - 25 hPa  
THR RWY 19 ELEV 688 - 25 hPa

**MALACKY PRECISION 127,150**  
**MALACKY RADAR 120,750 (259,825)**  
**MALACKY TOWER 129,575 (120,750)**

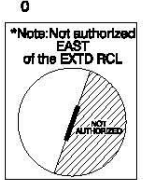
**MALACKY (LZMC)**  
**PAR RWY 19**  
**ACFT CAT A/B/C/D**



**MISSED APPROACH**  
Climb STRAIGHT AHEAD, at 1200 AMSL  
turn RIGHT to NDB RP, climbing to 3500 AMSL.  
At NDB RP turn LEFT to track 343°  
(QDR 343° RP), at 12 DME RP turn RIGHT  
to join the hold or initiate another approach.  
MAX IAS 185 kt. No turn before MM.

**RDH 56,8**  
THR RWY 19 ELEV 688 - 25 hPa  
NM to/from THR RWY 19

OCA (OCH)	ASC	A	B	C	D
Straight - In Approach	2,5% ft	951 (265)	963 (277)	971 (285)	982 (296)
Circling (* see Note)	ft	1120 (431)	1190 (501)	1650 (961)	1810 (1121)
VIS	m	1800	2800	3600	4600



DME RP	NM	7,0	6,0	5,0	4,0	3,0	2,0	1,0
ALTITUDES	ft	2953	2624	2296	1970	1645	1323	1001

Ground speed	kt	70	90	100	120	140	160	180
Rate of descent (5,2%)	ft/mIn	372	478	531	637	743	849	955

CHANGES: MAG VAR; MAG BRG; RDH; OCA(OCH) Straight - In Approach; ft and FAP position