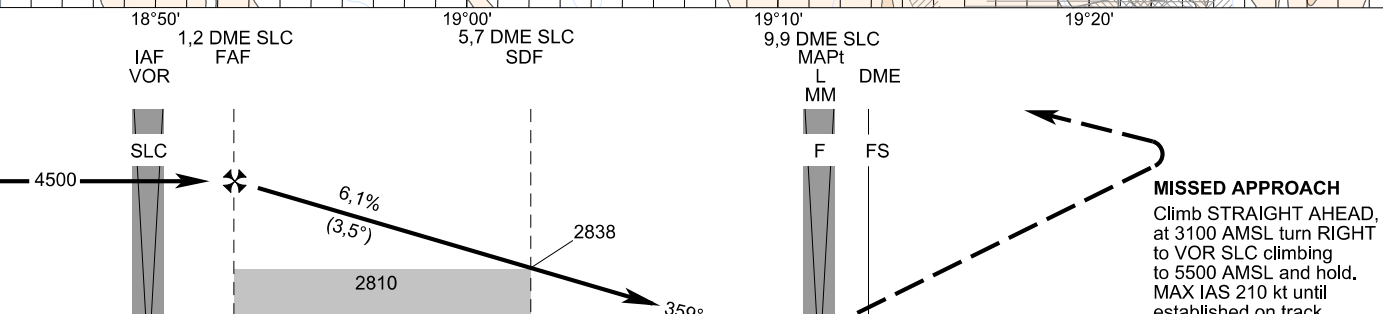
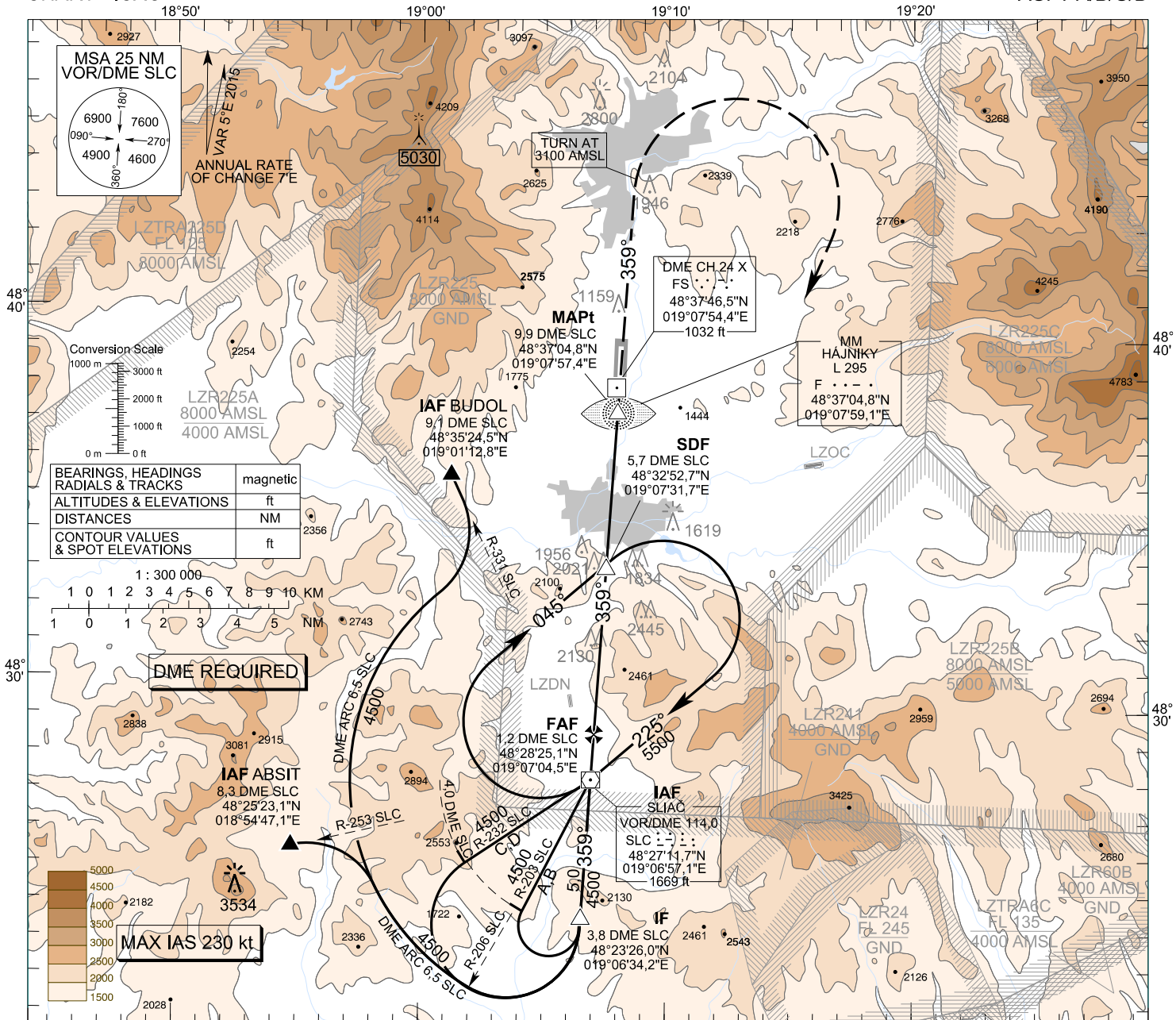


**INSTRUMENT
APPROACH
CHART - ICAO**

TRANSITION ALTITUDE 10 000 ft
AD ELEV 1044 - 38 hPa
THR RWY 36 ELEV 1014,5 - 37 hPa
SLIAČ RADAR 119,155
SLIAČ TOWER 122,905

**SLIAČ (LZSL)
VOR RWY 36
ACFT A/B/C/D**

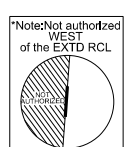


MISSED APPROACH
Climb STRAIGHT AHEAD, at 3100 AMSL turn RIGHT to VOR SLC climbing to 5500 AMSL and hold. MAX IAS 210 kt until established on track to VOR SLC. No turn before MAPt.

CHANGES: SLIAČ APPROACH cancelled

THR RWY 36 ELEV 1014,5 - 37 hPa
NM to/from THR RWY 36

OCA (OCH)		A	B	C	D
Straight-in	without SDF	ft	2810 (1796)		
Approach	with SDF	ft	2410 (1396)		
Circling (* see Note)		ft	2410 (1366)	2810 (1766)	2840 (1796)



DME SLC	NM	7,0	6,0	5,0	4,0	3,0	2,0
ALTITUDES	ft	2355	2726	3098	3470	3841	4213
Ground speed	kt	70	90	100	120	140	160
FAF - MAPt (8,7 NM)	min:sec	7:27	5:48	5:13	4:21	3:43	3:15
Rate of descent (6,1%)	ft/min	434	557	619	743	867	991

Timing not authorized for defining the MAPt